

# CANADA FLIGHT SUPPLEMENT / GPH 205

Effective 0901Z 29 December 2022 to 0901Z 23 February 2023

## B140 AERODROME/FACILITY DIRECTORY

### CAMPBELL RIVER BC (Cont'd)

CYBL

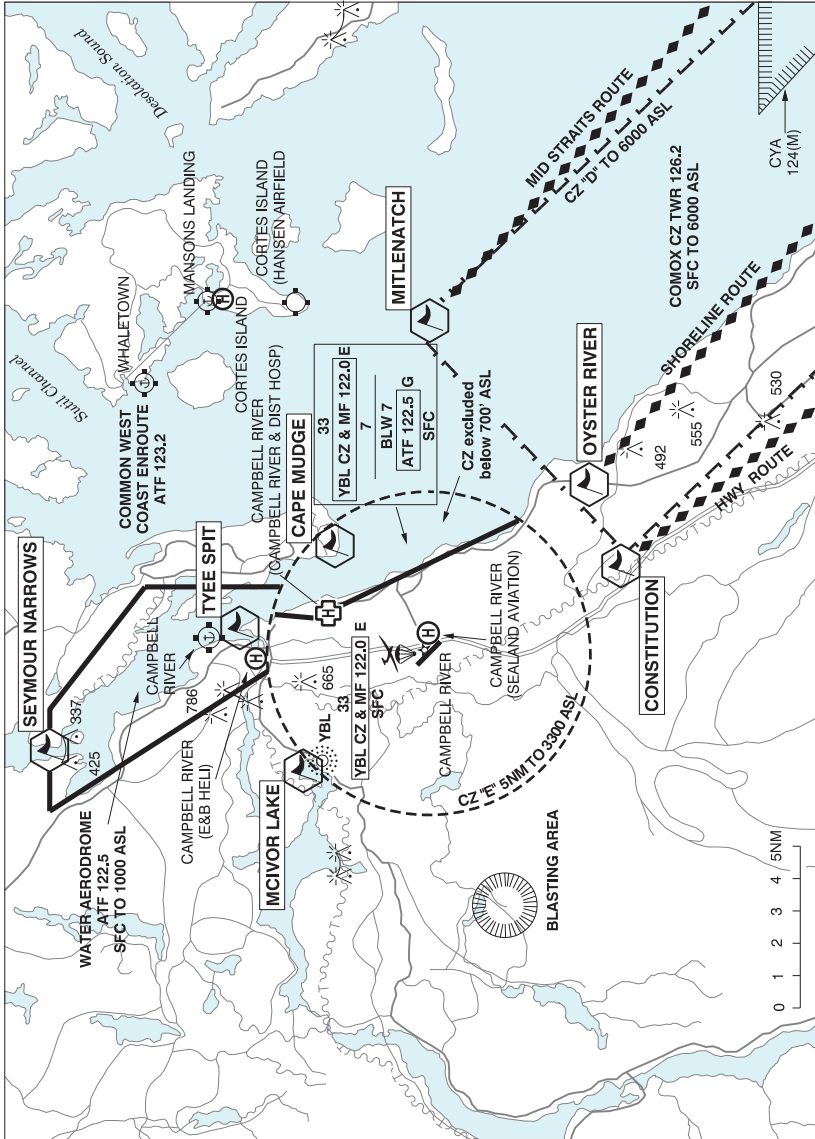
<b>RWY DATA</b>	Rwy 12(117°)/30(297°) 6499x150 ASPH Rwy 12 down 0.88%
<b>RWY CERT</b>	Rwy 12 RVR 1200(1/4sm) day only/Rwy 30 RVR 1200(1/4sm) day only AGN III B
<b>TWY CERT</b>	Twy: B, C, D AGN III A
<b>TWY</b>	No vehicle ctl on all twys. Twy C pavement width 34', max wt 44,000 lbs. Twy D is unlit.
<b>APRON</b>	Prkg plan in effect. Fees after 6 hrs, ctc opr. Itinerant prkg aprons I & II. See sketch. No run-ups on North side of Apron II (in front of FSS building).
<b>RCR</b>	Opr CRFI, Ltd win maint. To prevent damage to rwy turn in ungrooved areas. PLR/PCN
<b>HELI DATA</b>	Pad -1 23' dia concrete max acft length 58' (see apron sketch) Pad -2 45' dia asphalt
<b>LIGHTING</b>	12-AN(TE HI) P2 3°, 30-AO(TE HI) P2 3° Avbl 1330-0530Z± O/T ARCAL-122.0 type K.
<b>COMM</b>	
<b>RADIO</b>	Campbell rdo 122.0 (V) 1330-0530Z± (emerg only 250-923-3942)
<b>RCO</b>	Pacific rdo 123.55 (FISE) 126.7 (bcst)
<b>ATIS</b>	128.55 14-05Z±
<b>MF</b>	Campbell rdo 1330-0530Z± O/T tfc 122.0 5NM 3300 ASL excluding the area below 700' depicted on the Campbell River VTTC (CAR 602.98)
<b>TML</b>	Comox 123.7 227.6
<b>NAV</b>	
<b>NDB</b>	YBL 203 (L) N50 00 23 W125 21 27
<b>DME</b>	IBL 109.1 Ch 28 N49 57 19 W125 16 49 (376')
<b>ILS</b>	IBL 109.1 (Rwy 12) RVR LOC reliable only within 10° either side of centreline.
<b>PRO</b>	Rgt hand circuits Rwy 12 (CAR 602.96) Reduced Visibility Operations Plan (RVOP) Rwy 12/30 & Twy A ops to vis less than ½sm and greater than or equal to ¼sm. One in, one out. Day use only. Twy B & C are not avbl to access rwy for use during reduced vis ops. All acft must use Twy A to access the rwy.
<b>CAUTION</b>	Deer in vic of rwy. Parachuting to 12,500 ASL on A/D. Model acft rwy & activity aprx 1.5NM NE thld Rwy 12.

# CANADA FLIGHT SUPPLEMENT / GPH 205

Effective 0901Z 29 December 2022 to 0901Z 23 February 2023

B138 AERODROME/FACILITY DIRECTORY

## CAMPBELL RIVER VFR TERMINAL PROCEDURES CHART



# CANADA FLIGHT SUPPLEMENT / GPH 205

Effective 0901Z 29 December 2022 to 0901Z 23 February 2023

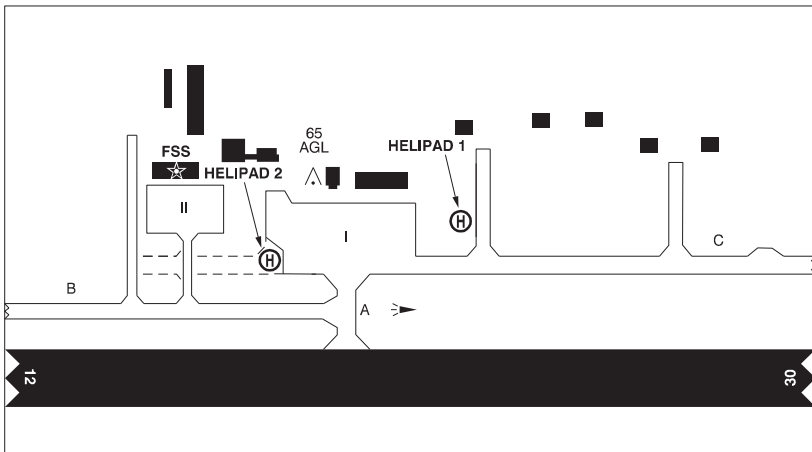
AERODROME/FACILITY DIRECTORY B139

## CAMPBELL RIVER VFR TERMINAL PROCEDURES CHART (Cont'd)

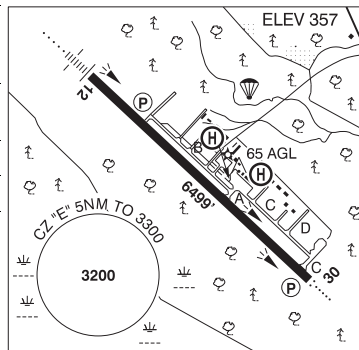
NAME	IDENT	LAT/LONG
CAPE MUDGE	VCMUD	N50° 00' 00" W125° 11' 00"
CONSTITUTION	VCCNS	N49° 51' 00" W125° 12' 00"
MCIVOR LAKE	VMCI	N50° 01' 00" W125° 22' 00"
MITLENATCH	VCMLN	N49° 57' 00" W125° 00' 00"
OYSTER RIVER	VCOYS	N49° 52' 00" W125° 08' 00"
SEYMOUR NARROWS	VCSMR	N50° 09' 00" W125° 21' 00"
TYEE SPIT	VCTYE	N50° 03' 00" W125° 15' 00"

### CAMPBELL RIVER BC

CYBL



<b>REF</b>	N49 57 07 W125 16 23 4.5S 18°E (2013) UTC-8(7) Elev 357' A5004 LO2 HI3 CAP
<b>OPR</b>	Dist of Campbell River 250-923-5012 Cert Ldg fees
<b>PF</b>	A-1,2,3,6, ATB ltd hrs C-2,4,5
<b>CUST</b>	AOE/15 888-226-7277
<b>FLT PLN</b>	
<b>FIG</b>	Kamloops 866-WXBRIEF (Toll free within Canada) or 866-541-4101 (Toll free within Canada & USA)
<b>ACC</b>	For IFR clnc outside FSS hrs ctc Tml 250-339-8115 before take-off.
<b>WX</b>	METAR 14-05Z† O/T LWIS TAF 16-05Z†, issue times: 16, 19, 01Z (DT 15, 19, 01Z).



### SERVICES

<b>FUEL</b>	100LL, JA-1 (also by truck) 15-04Z† O/T call out chg 2 hrs PN
<b>OIL</b>	All
<b>S</b>	2,4(ltd)